

2020-02-07

**Request for Tenders for
Polar Bear Exhibit and Holding Modifications**

RFT No.: TZC T 03-2020-01

ADDENDUM 3

This addendum shall be incorporated into, and form part of RFT No.: TZC T 03-2020-01 and take precedence over all requirements of the previously issued bid documents including plans. This addendum must be signed by the bidder (signing officer) in the appropriate space and must be attached to the form for submission by the bidder. This addendum consists of **TWO (2)** page(s) and the documents listed below.

1. DELETE PRICING FORM:

Rev 2 – APPENDIX III

REPLACE WITH PRICING FORM:

Rev 3 – APPENDIX III

2. DELETE DRAWINGS:

Rev 1 – A1.01 DEMO EXHIBIT SITE PLAN

Rev 1 – A1.02 PROPOSED EXHIBIT SITE PLAN

REPLACE WITH DRAWINGS:

Rev 2 – A1.01 DEMO EXHIBIT SITE PLAN

Rev 2 – A1.02 PROPOSED EXHIBIT SITE PLAN

3. ADD DRAWINGS:

A-200 – Polar Bear Holding Building Ground Floor Plan

A-210 – Polar Bear Holding Building Elevations

A-211 – Polar Bear Holding Building Elevations

A-220 – Polar Bear Holding Building Sections

A-300 – Polar Bear Underwater Viewing Area Plan

A-320 – Polar Bear Underwater Viewing Area Sections & Interior Elevations

Receipt of the addendum shall be acknowledged as part of your submission.

The Board of Management of the Toronto Zoo reserves the right to reject any or all quotations or to accept any quotation, should it deem such action to be in its interests.

If you have any queries regarding this matter, please contact Mr. Peter Vasilopoulos, Supervisor, Purchasing & Supply, at 416-392-5916.

Yours truly,

Peter Vasilopoulos
Supervisor, Purchasing & Supply

I/we hereby acknowledge receipt of this addendum and make allowance in my bid.

Signed (Must be Signing Officer of Firm)

Name of Firm

Date

**TZC T 03-2020-01 POLAR BEAR EXHIBIT & HOLDING MODIFICATIONS
PART 5- PRICING FORMS**

Rev 3 – APPENDIX III - ADDITIONAL PRICES (Due 24 hours after stipulated closing date)

(**not included** in Total Tender Price)

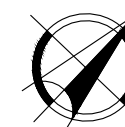
All prices are to include the supply and installation of all labour, material, taxes (excluding Harmonized Sales Tax), charges, payroll, burden and profit.

ITEM	DESCRIPTION	PRICE
A1	Enlarge animal transfer door between pool & maternity exhibits	\$ _____ Increase / Reduction
B1	Install shade sail in maternity exhibit	\$ _____ Increase / Reduction
B2	Install shade sail in pool exhibit – over pool	\$ _____ Increase / Reduction
B3	Install shade sail in pool exhibit – over land	\$ _____ Increase / Reduction
C1	All work required to enlarge doors D01, D02, D03 & D04 in the polar bear holding building. Includes all associated rockwork.	\$ _____ Increase / Reduction
D1	All work required to enlarge the pool in the maternity exhibit. Includes all associated services and rockwork.	\$ _____ Increase / Reduction

* For each item, insert amount in the appropriate column to indicate whether the price change will result in an increase in, or a reduction of, the Total Tender Price.

NO.	DESCRIPTION	DATE
0	FOR TENDER	2020.01.15.
1	FOR ADDENDUM 1	2020.02.04
2	FOR ADDENDUM 3	2020.02.07

NO.	REVISIONS	DATE



WALRUS

REVIEWED BY
 MANAGER:
 DATE:
 CURATOR:
 DATE:
 APPROVED BY
 COO:
 DATE:

**DEMO EXHIBIT
 SITE PLAN**

PROJECT #: 2004B
 DRAWN BY: DG
 CHECKED BY: LM
 DATE: 2020.01.15.
 SCALE: 1:175
 DRAWING #:

A1.01

POLAR BEAR
 GRASS EXHIBIT

POLAR BEAR HOLDING
 BUILDING (SEE A2.01
 FOR DETAILS)

SECTION OF CHAINLINK FENCE &
 WOOD FENCE MAY BE REMOVED
 FOR SITE ACCESS. CONTRACTOR TO
 REMOVE & REINSTATE / MAKE GOOD.

SERVICE ROAD

SHIFT DOOR MAY BE REMOVED TO
 ACCESS POOL EXHIBIT. CONTRACTOR TO
 REMOVE & REINSTATE / MAKE GOOD

MOVE ROCKS TO BACK OF EXHIBIT
 (BEHIND HOT WIRE FENCING)

EXCAVATE & PREP BASE
 FOR 8" CONCRETE PAD

2
 DEMO CONCRETE POOL, EXCAVATE
 AREA FOR LARGER CONCRETE POOL
 TO REPLACE EXISTING.
 ADDITIONAL PRICE ITEM (A)

LINE OF ROCKWORK ABOVE

MATERNITY
 EXHIBIT

DEMO ROCKWORK AROUND DOOR
 AND ENLARGE DOOR OPENING TO
 5'x5'. MAKE GOOD OPENINGS.
 MAKE GOOD ROCKWORK.
 ADDITIONAL PRICE ITEM (A)

DEMO CHAIN LINK ON FENCE
 (TWO LOWER PANELS)

VIEWING
 SHELTER

CLEAR ROCKS FROM IDENTIFIED AREAS.
 MOVE TO INACCESSIBLE AREAS OF
 EXHIBIT (BEHIND HOT WIRE FENCING)

LINE OF ROCKWORK ABOVE

POOL EXHIBIT

LINE OF ROCKWORK ABOVE

REMOVE VEGETATION FROM
 ROCKWORK PLANTER. REPLANT
 WITH NON LEAFY VEGETATION
 (PROVIDED BY TZ)

VIEWING GLASS BELOW

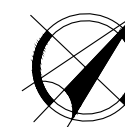
UNDERWATER
 VIEWING BELOW

PUBLIC
 PATHWAY

FILTRATION ROOM
 BELOW

NO.	DESCRIPTION	DATE
0	FOR TENDER	2020.01.15.
1	FOR ADDENDUM 1	2020.02.04
2	FOR ADDENDUM 3	2020.02.07

NO.	REVISIONS	DATE
-----	-----------	------


WALRUS

 REVIEWED BY
 MANAGER:
 DATE:
 CURATOR:
 DATE:
 APPROVED BY
 COO:
 DATE:

**PROPOSED EXHIBIT
SITE PLAN**

 PROJECT #: 2004B
 DRAWN BY: DG
 CHECKED BY: LM
 DATE: 2020.01.15.
 SCALE: AS SHOWN
 DRAWING #:

A1.02

 POLAR BEAR
 GRASS EXHIBIT

 POLAR BEAR HOLDING
 BUILDING (SEE A2.01
 FOR DETAILS)

 INSTALL NEW SHADE SAILS IN POOL & MATERNITY EXHIBITS
 (25m² EACH). NEW ANCHOR POINTS ON 6" SCHEDULE
 40 PIPE POSTS @12' HEIGHT. DESIGN OF POSTS &
 FOOTINGS BY ENGINEER. ADDITIONAL PRICE ITEMS (B1-3).

 INSTALL NEW HOT WIRE ALONG EXISTING
 FENCELINE AT 5' HEIGHT (15m)

 INSTALL NEW HOT WIRE
 WITH REMOVABLE POSTS
 (25m). SEE A3.01

 INSTALL NEW 8" CONCRETE
 PAD (50sm). SEE A3.01

 INSTALL NEW CONCRETE POOL WITH
 SMOOTH ROCKWORK FINISH. SEE A3.02.
 ADDITIONAL PRICE WORK BL

 INSTALL NEW HOT WIRE WITH
 REMOVABLE POSTS (20m).
 SEE A3.01.

 COVER EXISTING NATURAL ROCK
 WITH ROCKWORK TO SMOOTH
 TEXTURE. PROVIDE MOCKUP FOR
 REVIEW BY TZ

 INSTALL NEW GUILLOTINE
 DOOR USING EXISTING
 HYDRAULIC SYSTEM. REPLACE
 ACTUATOR. MATCH EXISTING
 DOOR CONSTRUCTION.

POOL EXHIBIT

 REPAIR DETERIORATING AREAS OF CONCRETE SLAB.
 CLEAN AREA AND REMOVE UNSTABLE CONCRETE.
 APPLY BONDING AGENT.
 POUR CONCRETE & TROWEL SMOOTH FINISH.
 BLEND WITH EXISTING CONCRETE.

 INSTALL 3/8" GRADE 316 SS PLATES
 OVER CAULKING AROUND GLAZING
 ON EXHIBIT SIDE (SEE A3.01)

VIEWING GLASS BELOW

 UNDERWATER
 VIEWING BELOW

 WELD 3" x 1/4" SS FLAT BAR FRAME RECEIVER
 TO EXISTING 3/2" SCHEDULE 40 PIPE FENCE
 POSTS.

 WELD 2" x 2" x 1/4" SS WOVEN WIRE MESH TO
 RECEIVER FRAME & SANDWICH W/ 3" x 1/4" SS
 FLAT BAR FRAME.

 SECURE WITH 1/2" x 3" SS BOLTS/ FLAT
 WASHERS/ LOCK WASHERS/ NUT.

 PUBLIC
 PATHWAY

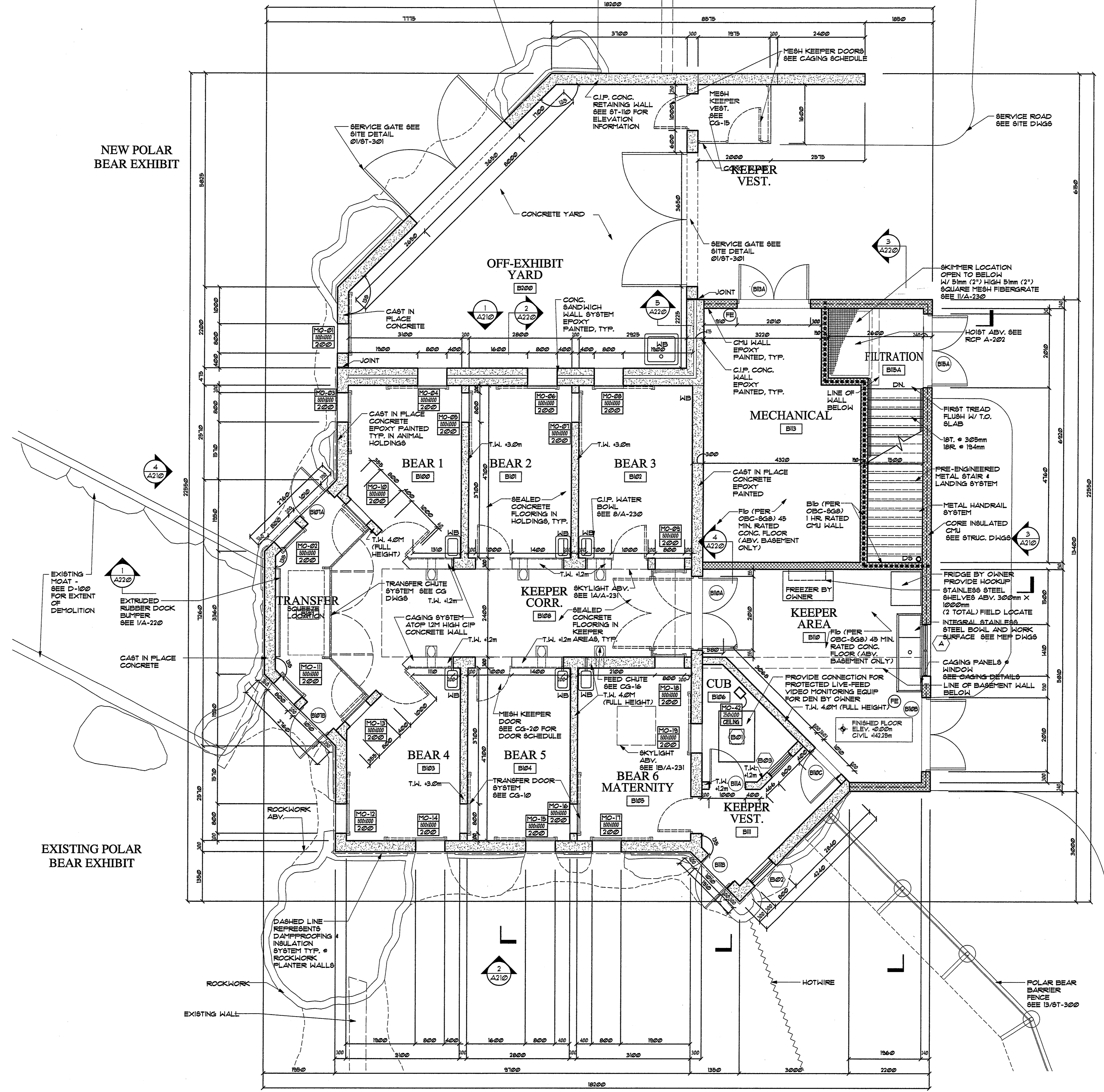
 FILTRATION ROOM
 BELOW

 1
 A3.01

1

SITE PLAN

Scale: 1:175



- GENERAL NOTES**
1. Contractor shall verify all dimensions and conditions prior to location of work and shall notify Architect of any discrepancies.
 2. All dimensions, except as noted, are to outside face of CHU or outside face of partition.
 3. Contractors will be required to fill and grout cracks, cavities, and holes on walls, ceilings, and floors for a smooth flush surface with no apparent holes.
 4. Refer to 'CG' sheets for layout and details of all caging, keeper, and transfer doors.
 5. Floor elevations will vary in the keeper and animal areas in order to accommodate a min. 2% slope to drains. See drainage plan for details.
 6. See 'Floor Plans' for fire-rated partitions. All penetrations thru fire-rated walls shall be fire and smoke sealed with a UL approved fire sealant system.
 7. See finish schedule A-200 for wall, floor, and ceiling surface treatments.

- SYMBOL LEGEND**
- Door Identification Number - See A-200 for Door Schedules
 - Window Type - See A-200 for Window Types & Schedules
 - View Glazing Identification Number - See A-200 for details & schedules
 - 1 Hr. Fire Partition
 - 2 Hr. Fire Partition
 - Masonry Opening Identification No. - Masonry Opening Width x Height in mm
 - Masonry Opening 600 Height APF
- NOTE:** Refer to floor plans AND reflected ceiling plans for masonry opening sizes and locations. See A-200 for opening sizes & window & doors.

- WALL TYPES**
- Cast in place concrete with artificial rockwork, dampproofing, drainage & insulation. See 13/ST-303 for guide planter detail.
 - Cast in place concrete
 - Cast in place concrete half wall, caging div.
 - CHU block, core-insulated
 - CHU block
 - Existing Wall

1 Polar Bear Holding Building - Ground Floor Plan
A-200 SCALE: 1:50

NOTE: ALL DIMENSIONS ARE MILLIMETERS (mm) UNLESS OTHERWISE NOTED.
NOTE: See attached Building Code Matrix for Architect's qualification information.



CLR design inc. Valdor Engineering, Inc. Carruthers & Wallace Stantec Engineering Cannon Design Landplan Collaborative, Ltd. BaAM Productions T.A. Maranda Consultants, Inc.

Landscape Architects, Architects & Exhibit Designers
661 Christlea Road, Suite 11
121 N Broad Street, 7th Floor
Philadelphia, PA 19107
(215) 564-0250

Civil Engineers
970 Lawrence Avenue W., Suite 11
Woodbridge, Ontario L4L 8A3
(905) 264-0054

Structural Engineers
372 Bay Street, Suite 600
Toronto, Ontario M5A 3B6
(416) 789-2600

MEP Engineers
124 Merton Street, 18th Floor
Toronto, Ontario M5H 2W9
(416) 366-0220

Associated Architect
124 Merton Street, Suite 203
Toronto, Ontario M4S 2Z2
(416) 915-0121

Associated Landscape Architect
319 Woolwich Street
Guelph, Ontario N1H 3W4
(519) 824-8664

Interpretive Design
662 King Street West, Suite 101
Toronto, Ontario M5V 1M7
(800) 703-0740

Water Systems Engineers
8616 Blue Grouse Way
Blaine, WA 98230
(360) 371-3107

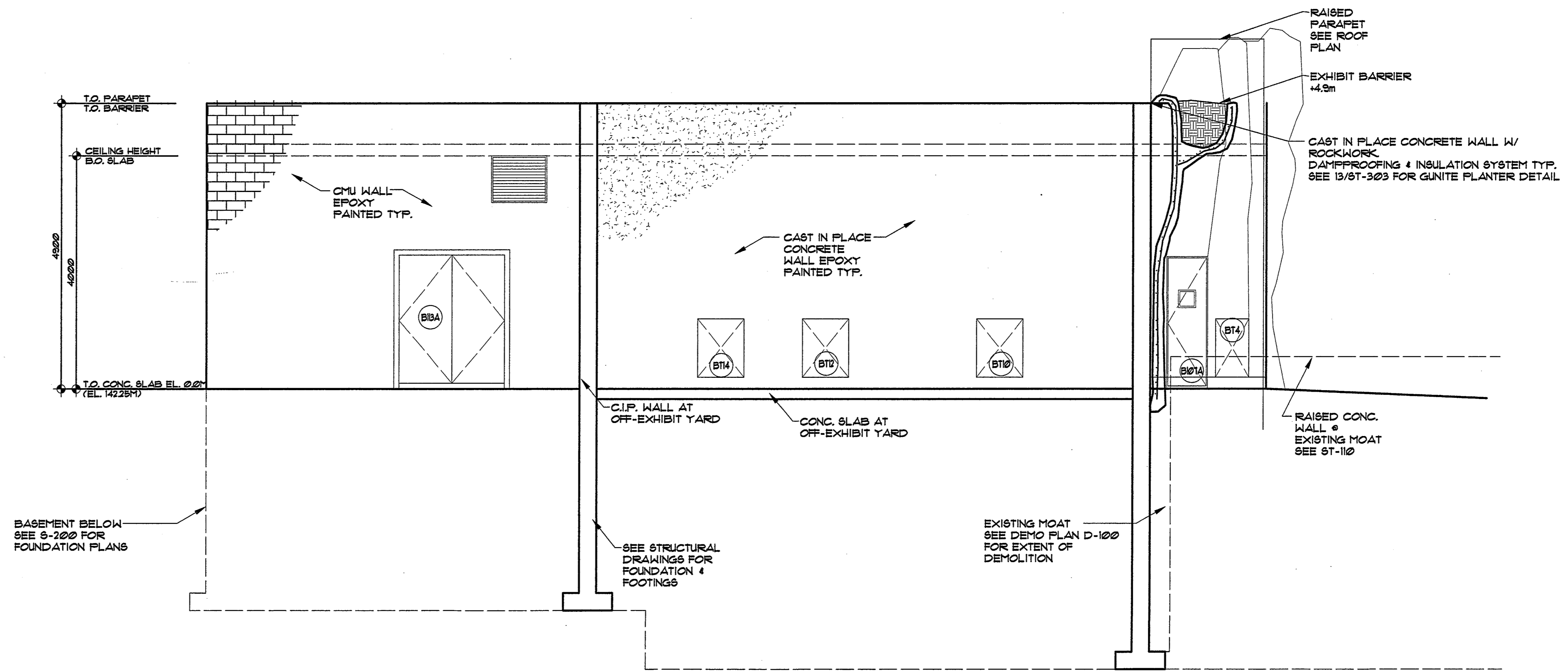


Revisions

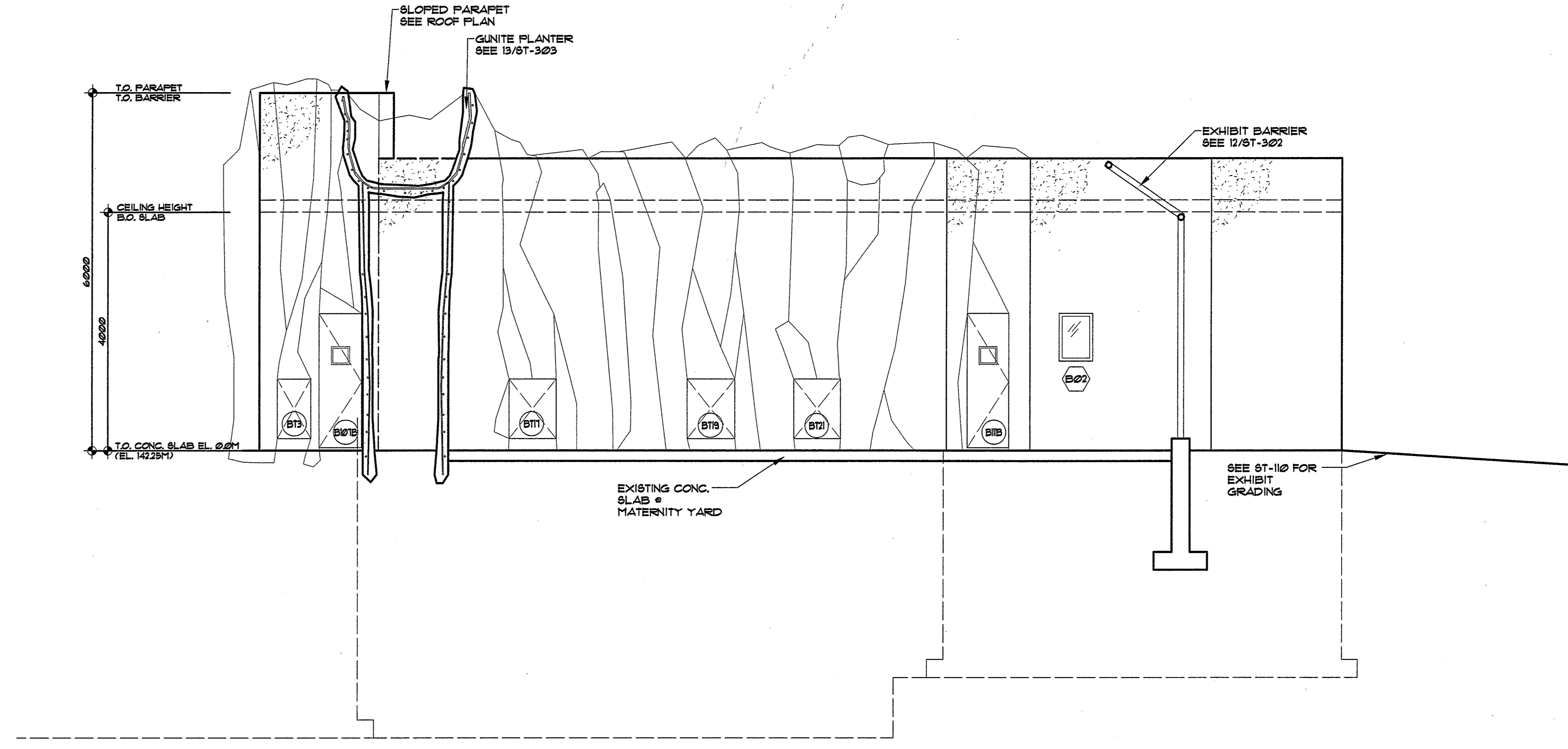
Issued for Tender and Permit - March 2, 2007

Polar Bear Holding Building Ground Floor Plan

Project Number 05646	Drawing No.
Project Manager JS	A-200
Drawn JK Scale 1:50	
Checked Date March 2, 2007	
General Notes:	



1 Polar Bear Holding Building - North Elevation
A-210 SCALE: 1:50



2 Polar Bear Holding Building - South Elevation
A-210 SCALE: 1:50

NOTE: ALL DIMENSIONS ARE MILLIMETERS (mm) UNLESS OTHERWISE NOTED.
NOTE: See attached Building Code Matrix for Architect's qualification information.

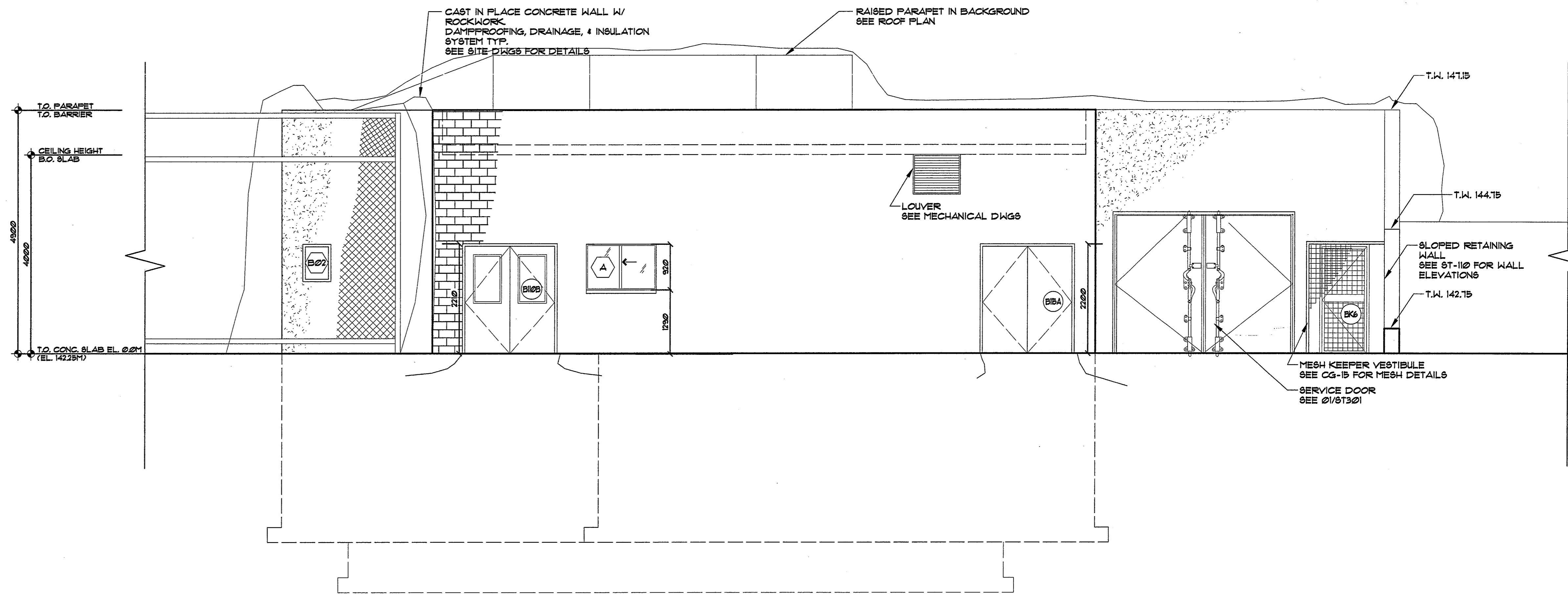


CLRdesign inc. Valdor Engineering, Inc. Carruthers & Wallace
A Division of Triv Associates Inc.
Landscape Architects, Architects & Exhibit Designers
661 Chrislea Road, Suite 11 Woodbridge, Ontario L4L 8A3 (905) 264-0054 (215) 564-0250
Civil Engineers
970 Lawrence Avenue W., Suite 600 Toronto, Ontario M6A 3B6 (416) 789-2600
Structural Engineers
372 Bay Street, 18th Floor Toronto, Ontario M5H 2W9 (416) 366-0220
MEP Engineers
124 Merton Street, Suite 213 Toronto, Ontario M4S 2Z2 (416) 915-0121
Associated Architect
319 Woolwich Street Guelph, Ontario N1H 3W4 (519) 824-8664
Associated Landscape Architect
622 King Street West, Suite 101 Toronto, Ontario M5V 1M7 (800) 703-0740
Interpretive Design
8616 Blue Grouse Way Blaine, WA 98230 (360) 371-3107
Water Systems Engineers
T.A. Maranda Consultants, Inc.

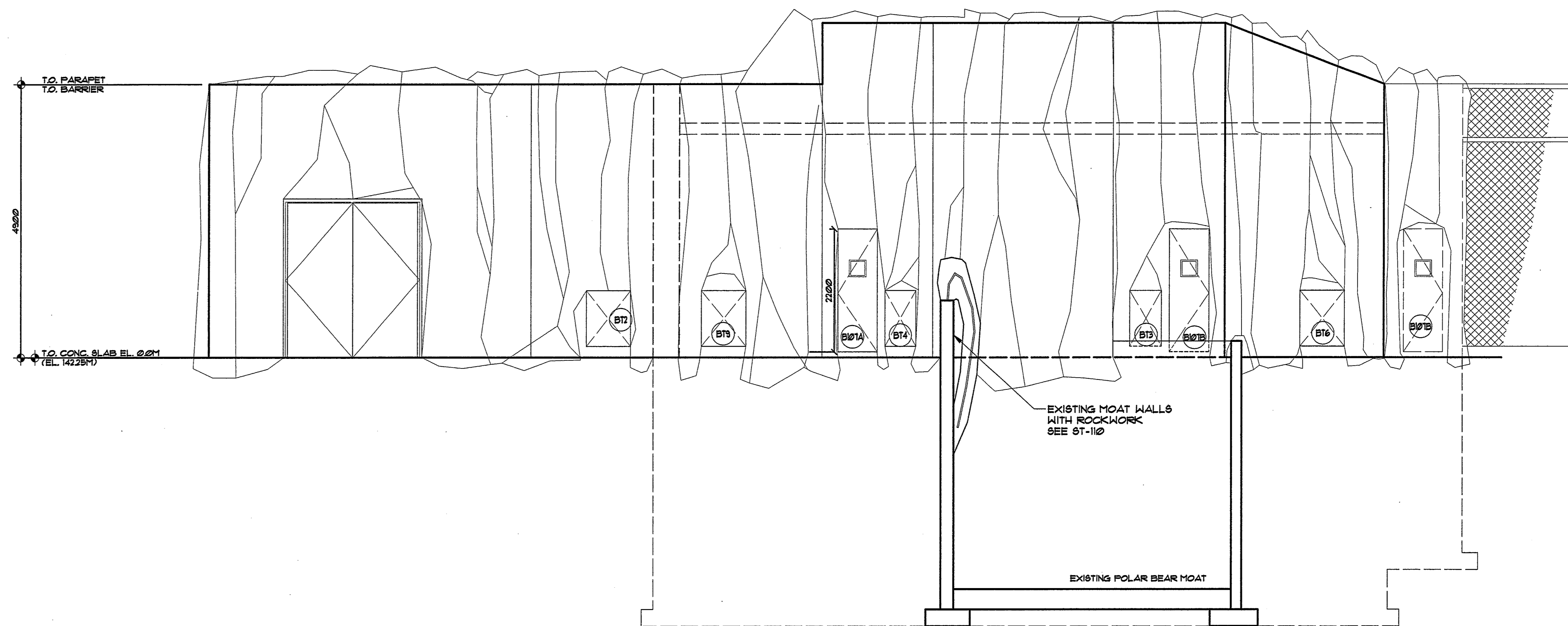


Revisions	
Issued for Tender and Permit - March 2, 2007	

Polar Bear Holding Building Elevations		
Project Number	05646	Drawing No.
Project Manager	JS	A-210
Drawn	JK	Scale
Checked	JB	Date
General Notes:		



1 Polar Bear Holding Building - East Elevation
A-211 SCALE: 1:50



2 Polar Bear Holding Building - West Elevation
A-211 SCALE: 1:50

NOTE: ALL DIMENSIONS ARE MILLIMETERS (mm) UNLESS OTHERWISE NOTED.

NOTE: See attached Building Code Matrix for Architect's qualification information.



CLRdesign inc.

Landscape Architects, Architects & Exhibit Designers
121 N Broad Street, 7th Floor
Philadelphia, PA 19107
(215) 564-0250

Civil Engineers
661 Chrislea Road, Suite 11
Woodbridge, Ontario L4L 8A3
(905) 264-0054

Valdor Engineering, Inc.

Structural Engineers
970 Lawrence Avenue W., Suite 600
Toronto, Ontario M6A 3B6
(416) 789-2600

Carruthers & Wallace

MEP Engineers
372 Bay Street, 18th Floor
Toronto, Ontario M5H 2W9
(416) 366-0220

Stantec Engineering

Associated Architect
124 Merton Street, Suite 203
Toronto, Ontario M4S 2Z2
(416) 915-0121

Cannon Design

Associated Landscape Architect
319 Woolwich Street
Guelph, Ontario N1H 3W4
(519) 824-8664

Landplan Collaborative, Ltd.

Interpretive Design
662 King Street West, Suite 101
Toronto, Ontario M5V 1M7
(800) 703-0740

BaAM Productions

Water Systems Engineers
8616 Blue Grouse Way
Blaine, WA 98230
(360) 371-3107

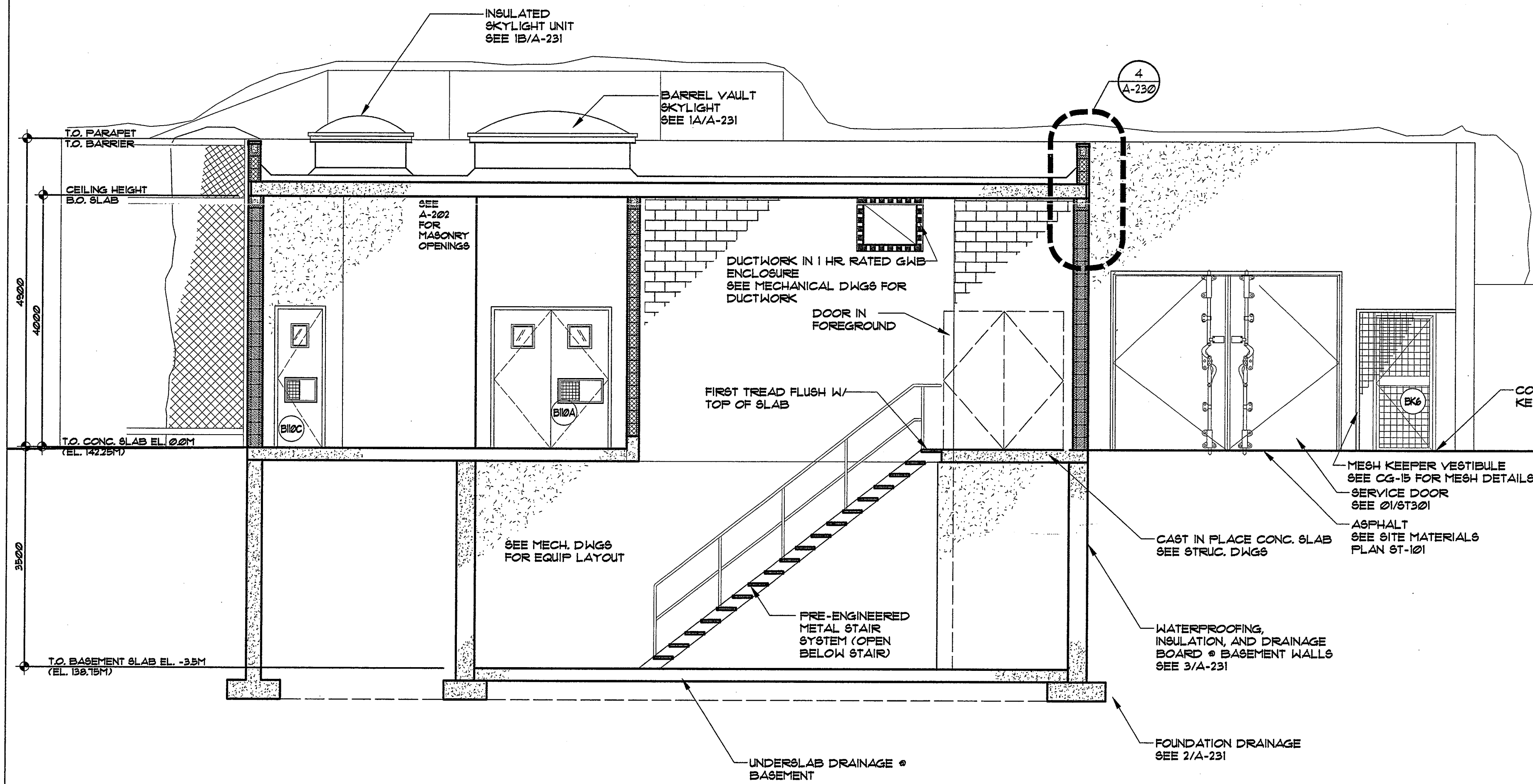
T.A. Maranda Consultants, Inc.

Revisions

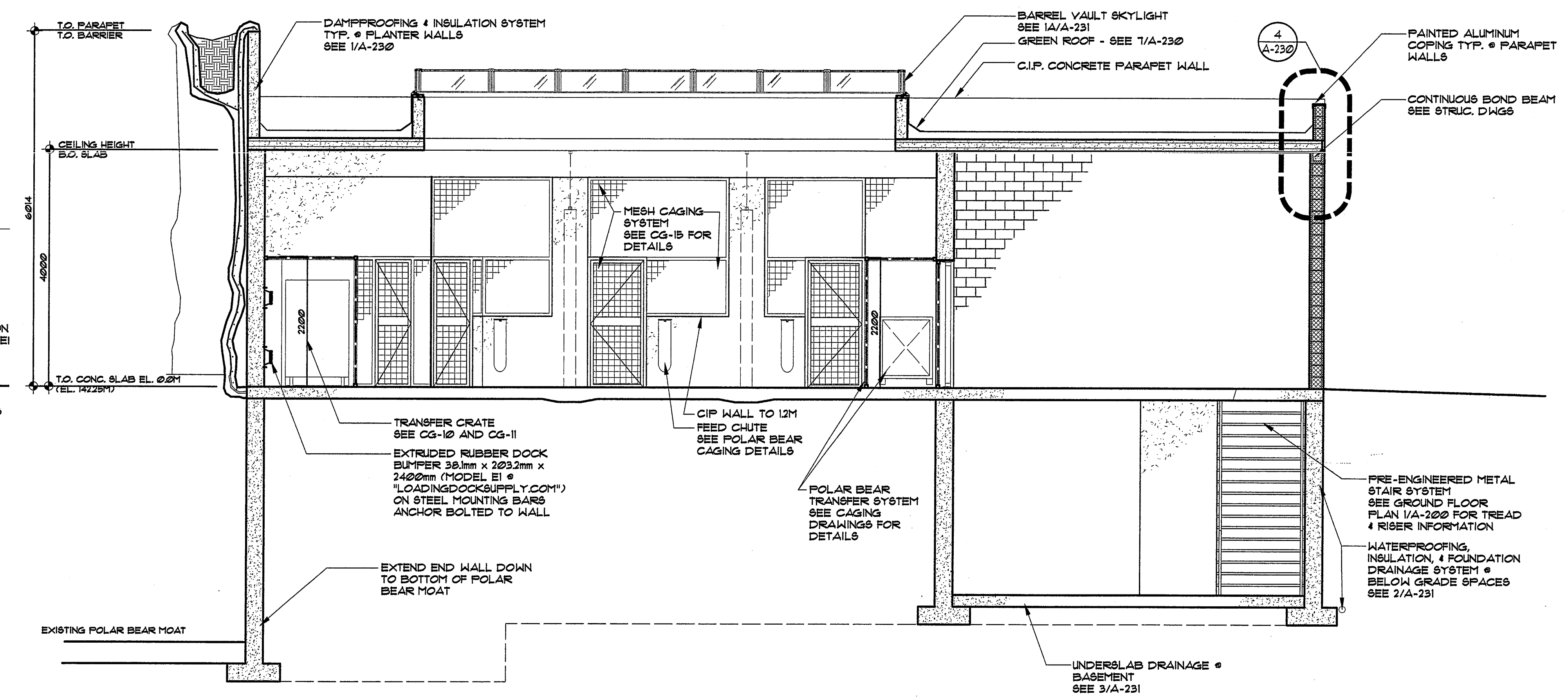
Issued for Tender and Permit - March 2, 2007

Polar Bear Holding Building Elevations

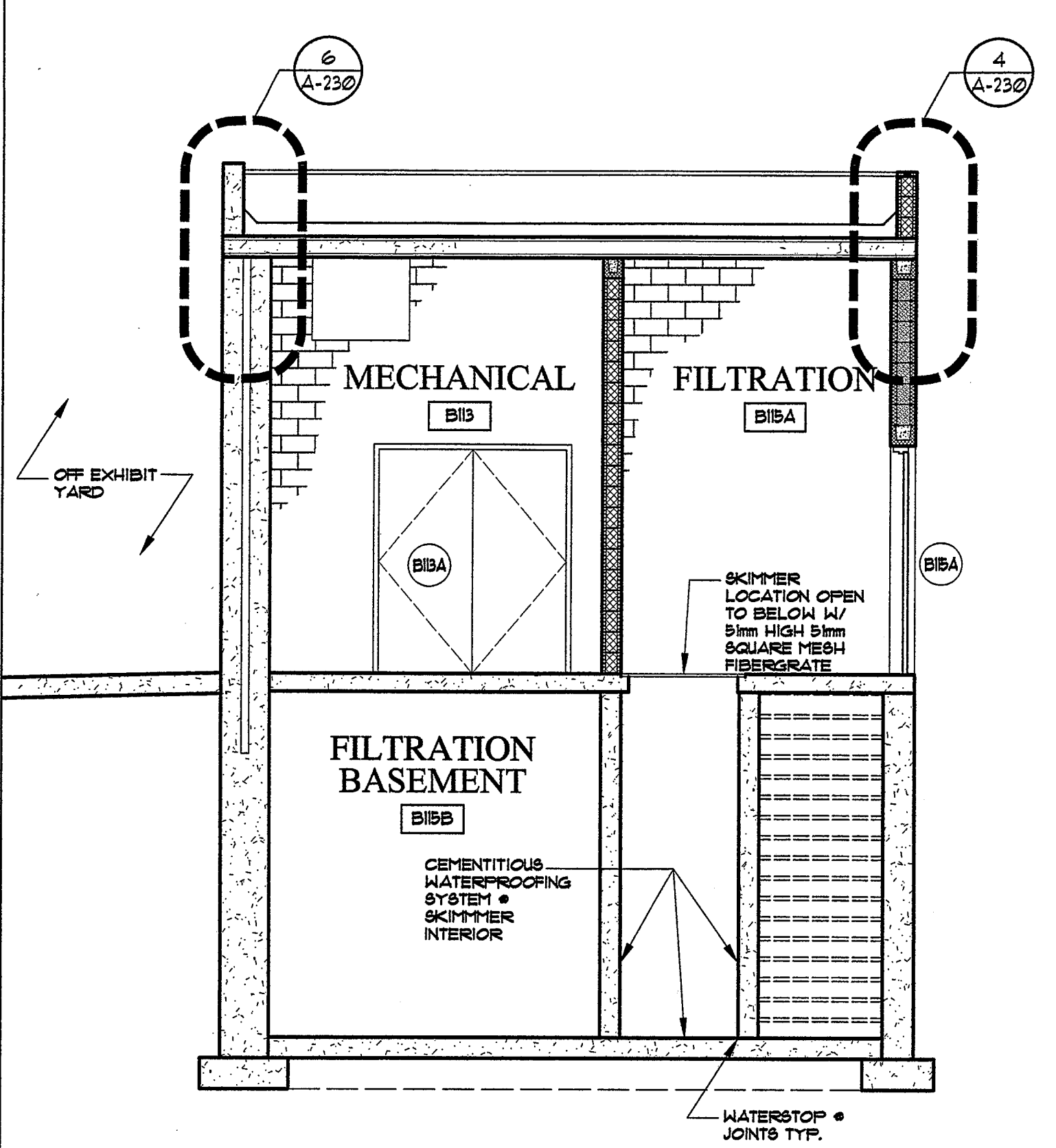
Project Number	05646	Drawing No.	A-211
Project Manager	JS		
Drawn	JK	Scale	1:50
Checked		Date	March 2, 2007
General Notes:			



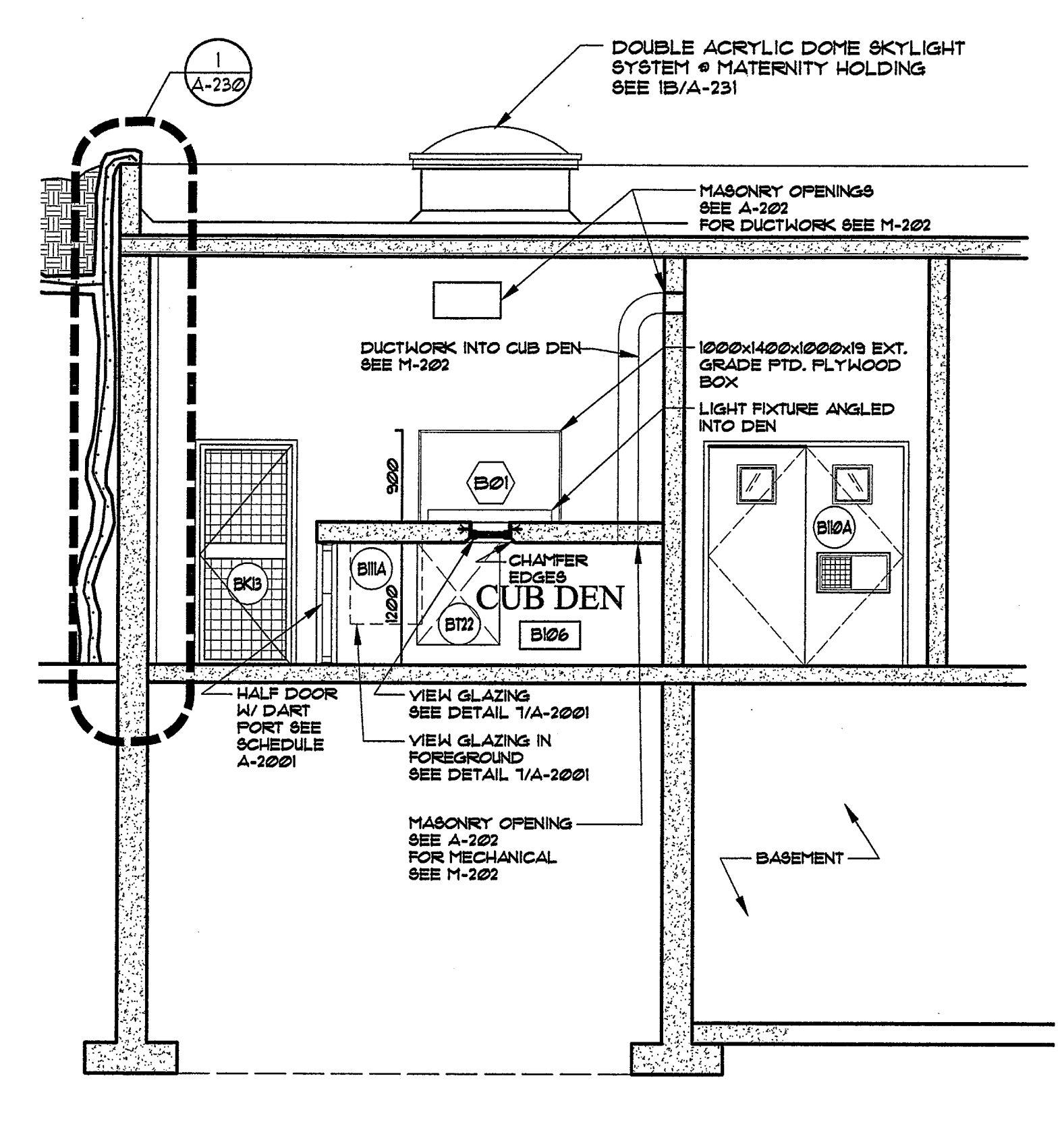
3 Polar Bear Holding Building - Section
 A-220 SCALE: 1:50



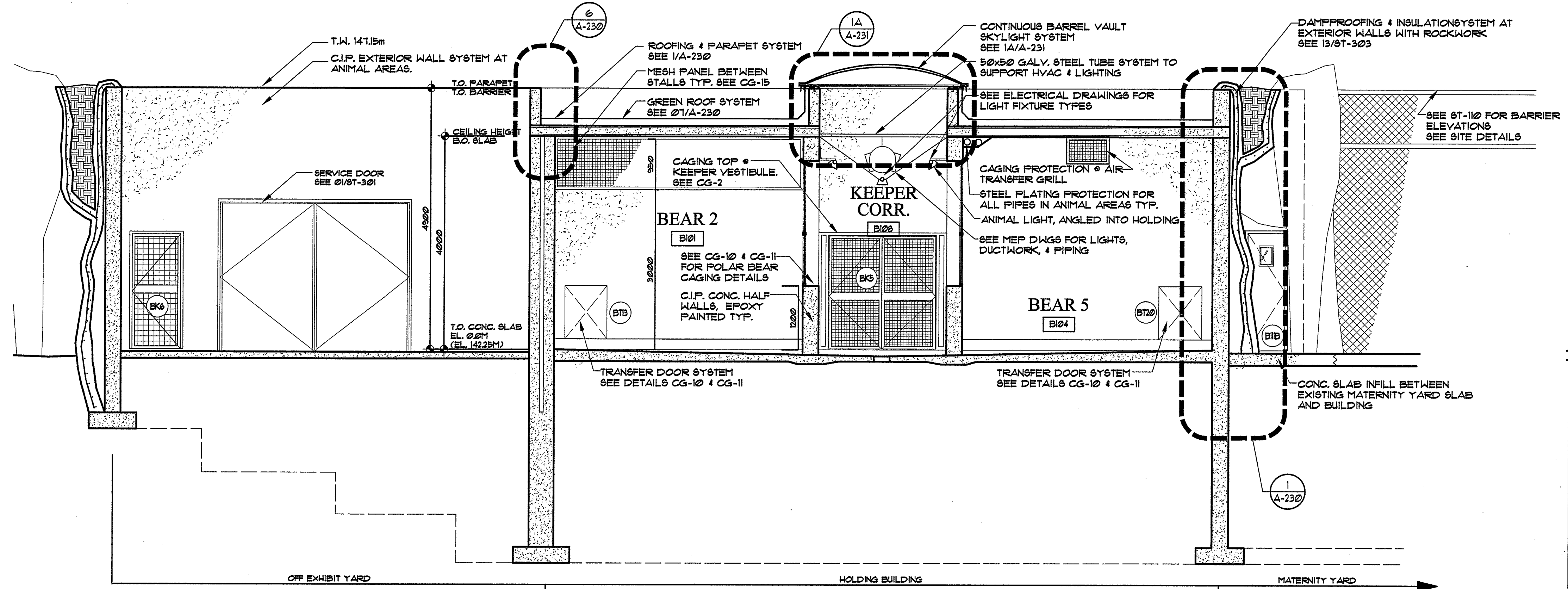
1 Polar Bear Holding Building - Section
 A-220 SCALE: 1:50



5 Polar Bear Holding Building - Section
 A-220 SCALE: 1:50



4 Polar Bear Holding Building - Section
 A-220 SCALE: 1:50



2 Polar Bear Holding Building - Section
 A-220 SCALE: 1:50

NOTE: ALL DIMENSIONS ARE MILLIMETERS (mm) UNLESS OTHERWISE NOTED.
 NOTE: See attached Building Code Matrix for Architect's qualification information.



CLRdesign inc. Valdor Engineering, Inc. Carruthers & Wallace
 Structural Engineers 661 Chrislea Road, Suite 11 Woodbridge, Ontario L4L 8A3 (905) 264-0054
 970 Lawrence Avenue W., Suite 600 Toronto, Ontario M6A 3B6 (416) 789-2600
 Stantec Engineering 372 Bay Street, 18th Floor Toronto, Ontario M5H 2W9 (416) 366-0220
 Cannon Design 124 Merton Street, Suite 203 Toronto, Ontario M4S 2Z2 (416) 915-0121
 Landplan Collaborative, Ltd. 319 Woolwich Street Guelph, Ontario N1H 3W4 (519) 824-8664
 BaAM Productions 662 King Street West, Suite 101 Toronto, Ontario M5V 1M7 (800) 703-0740
 T.A. Maranda Consultants, Inc. 8616 Blue Grouse Way Blaine, WA 98230 (360) 371-3107

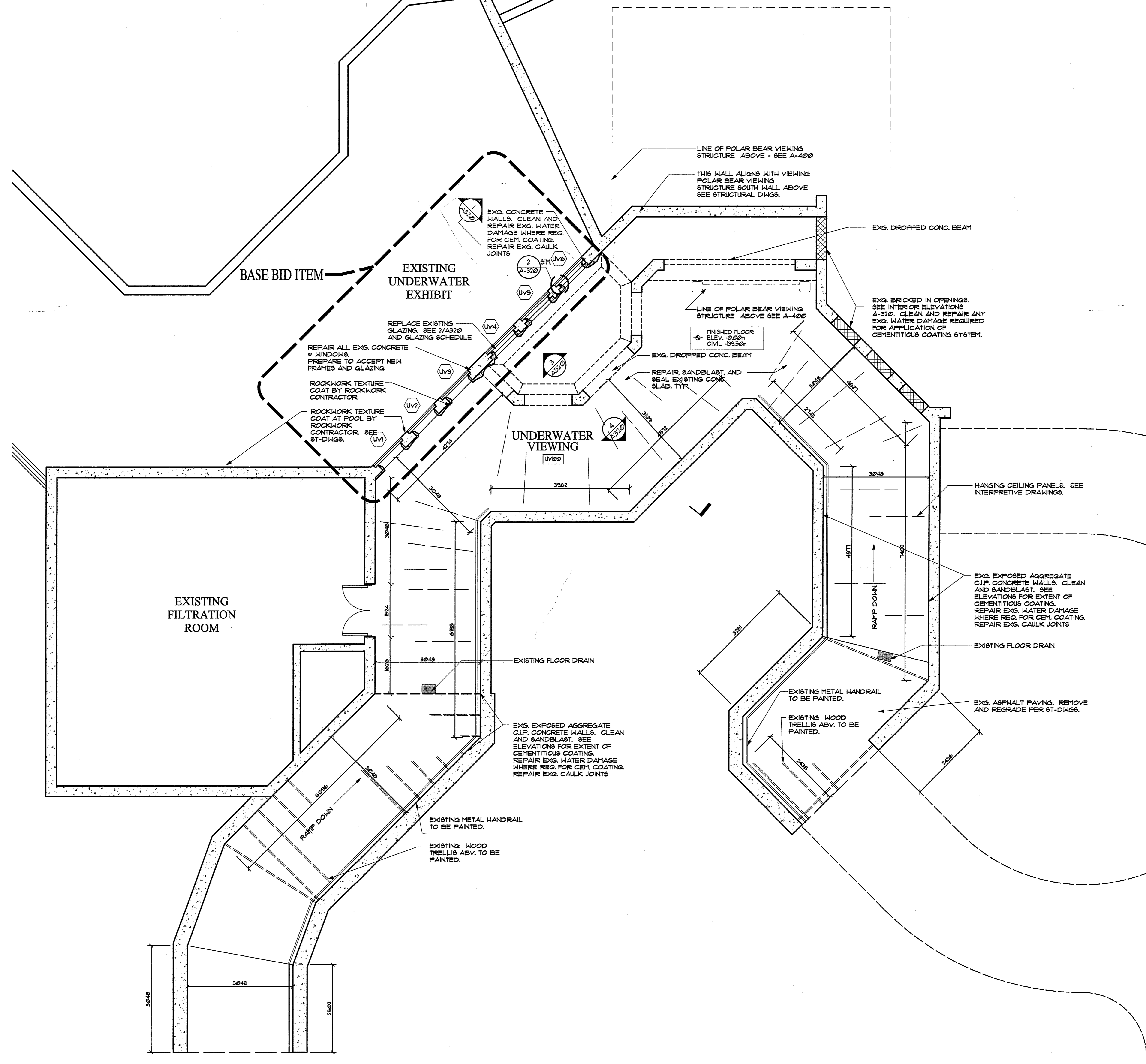


Revisions

Issued for Tender and Permit - March 2, 2007

Polar Bear Holding Building Sections

Project Number 05646	Drawing No.
Project Manager JS	A-220
Drawn JK Scale 1:50	
Checked JB Date March 2, 2007	
General Notes:	



- GENERAL NOTES**
- Contractor shall verify all dimensions and conditions prior to inception of work and shall notify Architect of any discrepancies.
 - All dimensions, except as noted, are to outside face of CMU or outside face of partition.
 - Contractors will be required to fill and grout cracks, crevices, and holes on walls, ceilings, and floors for a smooth finish surface with no apparent holes.
 - Refer to 'CG' sheets for layout and details of all caging, keeper, and transfer doors.
 - Floor elevations will vary in the keeper and animal areas in order to accommodate a six (6) slope to drains. See drainage plan for details.
 - See 'Floor Plans' for fire-rated partitions. All penetrations thru fire-rated walls shall be fire and smoke sealed with a UL approved fire sealant system.
 - See finish schedule A-2001 for wall, floor, and ceiling surface treatments.
- SYMBOL LEGEND**
- Door Identification Number - See A-2001 for Door Schedules
 - Window Type - See A-2001 for window types & schedules
 - View Glazing Identification Number - See A-2001 for details & schedules
 - 1 Hr. Fire Partition
 - 2 Hr. Fire Partition
 - Masonry Opening Identification No. (MO-04)
 - Masonry Opening Width x Height in mm (1800 x 2200)
 - Masonry Opening 800 Height AFF.
- NOTE:** Refer to floor plans and reflected ceiling plans for masonry opening sizes and locations. See A-2001 for opening sizes & windows & doors.
- WALL TYPES**
- Cast in place concrete with artificial rockwork, cladding, drainage & insulation. See 1807-303 for granite planter detail.
 - Cast in place concrete
 - Cast in place concrete half wall, caging floor.
 - CMU block, core-insulated
 - CMU block

1 Polar Bear Underwater Viewing - Plan
 A-300 SCALE: 1:50

NOTE:
 BASE BID ITEMS
 ON THIS SHEET.
 (AS NOTED)
 ALTERNATE #5

NOTE: ALL DIMENSIONS ARE MILLIMETERS (mm) UNLESS OTHERWISE NOTED.
 NOTE: See attached Building Code Matrix for Architect's qualification information.



CLRdesign inc.
 Landscape Architects, Architects & Exhibit Designers
 121 N Broad Street, 7th Floor
 Philadelphia, PA 19107
 (215) 564-0250

Valdor Engineering, Inc.
 Civil Engineers
 661 Christie Road, Suite 11
 Woodbridge, Ontario L4L 8A3
 (905) 264-0054

Carruthers & Wallace
 A Division of Triv Associates Inc.
 Structural Engineers
 970 Lawrence Avenue W., Suite 600
 Toronto, Ontario M6A 3B6
 (416) 789-2600

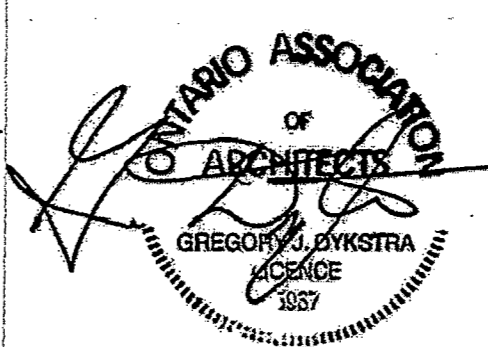
Stantec Engineering
 MEP Engineers
 372 Bay Street, 18th Floor
 Toronto, Ontario M5H 2W9
 (416) 366-0220

Cannon Design
 Associated Architect
 124 Merton Street, Suite 203
 Toronto, Ontario M4S 2Z2
 (416) 915-0121

Landplan Collaborative, Ltd.
 Associated Landscape Architect
 319 Woolwich Street
 Guelph, Ontario N1H 3W4
 (519) 824-8664

BaAM Productions
 Interpretive Design
 662 King Street West, Suite 101
 Toronto, Ontario M5V 1M7
 (800) 763-0740

T.A. Maranda Consultants, Inc.
 Water Systems Engineers
 8616 Blue Grouse Way
 Blaine, WA 98230
 (360) 371-3107



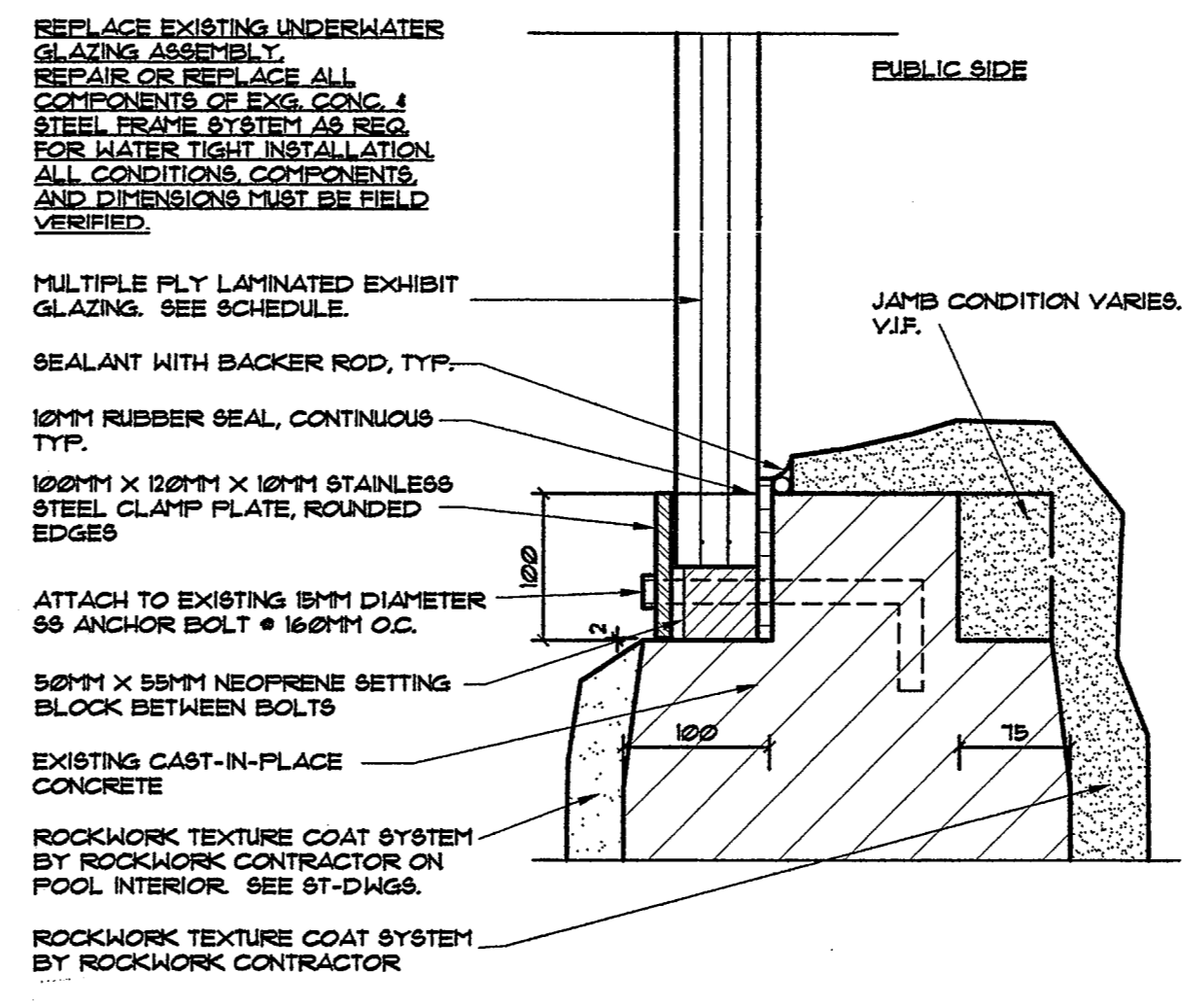
Revisions

Issued for Tender and Permit - March 2, 2007

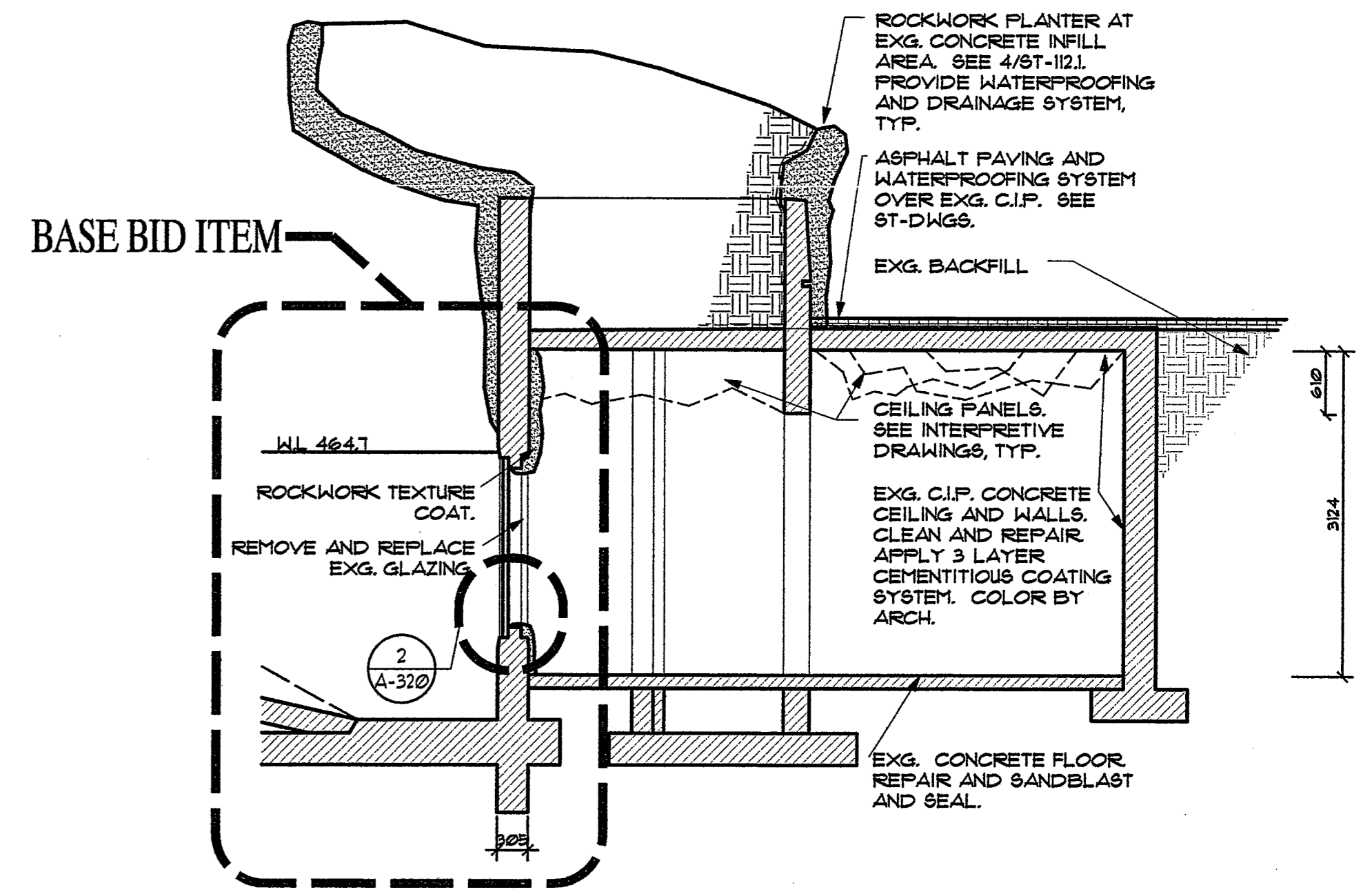
Polar Bear Underwater Viewing Area Plan

Project Number 05646	Drawing No.
Project Manager JS	A-300
Drawn JK Scale 1:50	
Checked Date March 2, 2007	
General Notes:	

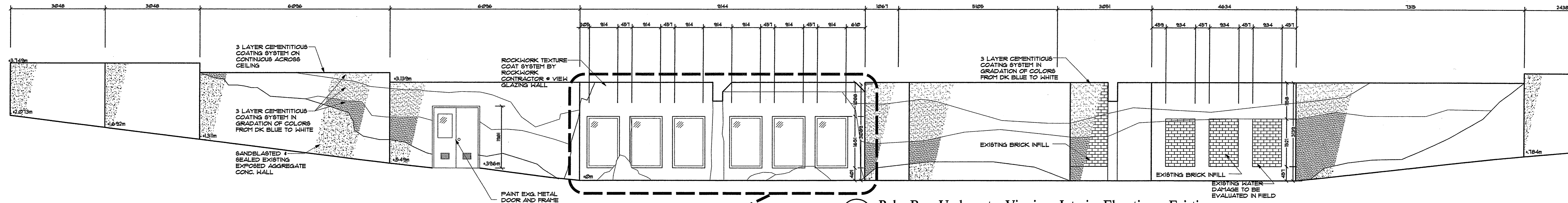
ANIMAL SIDE - UNDERWATER



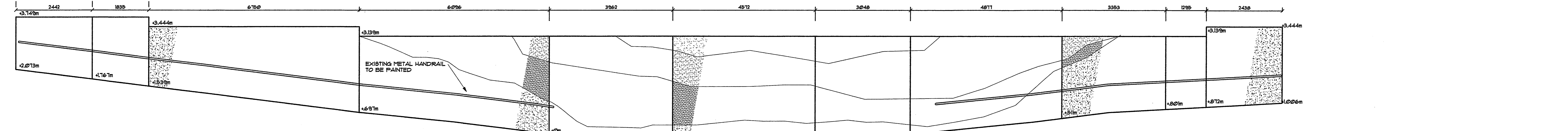
BASE BID ITEM **2** Glazing Detail
A-320 SCALE: 1:5



1 Polar Bear Underwater Viewing - Section - Existing
A-320 SCALE: 1:50



BASE BID ITEM **3** Polar Bear Underwater Viewing - Interior Elevations - Existing
A-320 SCALE: 1:50



4 Polar Bear Underwater Viewing - Interior Elevations - Existing
A-320 SCALE: 1:50

NOTE:
BASE BID ITEMS
ON THIS SHEET.
(AS NOTED)
ALTERNATE #5

NOTE: ALL DIMENSIONS ARE MILLIMETERS (mm) UNLESS OTHERWISE NOTED.
NOTE: See attached Building Code Matrix for Architect's qualification information.



CLRdesign inc. | **Valdor Engineering, Inc.** | **Carruthers & Wallace** | **Stantec Engineering** | **Cannon Design** | **Landplan Collaborative, Ltd.** | **BaAM Productions** | **T.A. Maranda Consultants, Inc.**

Landscape Architects, Architects & Exhibit Designers
661 Christie Road, Suite 11
121 N Broad Street, 7th Floor
Philadelphia, PA 19107
(215) 564-0250

Civil Engineers
661 Christie Road, Suite 11
Woodbridge, Ontario L4L 8A3
(905) 264-0054

Structural Engineers
970 Lawrence Avenue W., Suite 600
Toronto, Ontario M6A 3B6
(416) 789-2600

MEP Engineers
372 Bay Street, 18th Floor
Toronto, Ontario M5H 2W9
(416) 566-0220

Associated Architect
124 Merton Street, Suite 203
Toronto, Ontario M4S 2Z2
(416) 915-0121

Associated Landscape Architect
319 Woolwich Street
Guelph, Ontario N1H 3W4
(519) 824-8664

Interpretive Design
662 King Street West, Suite 101
Toronto, Ontario M5V 1M7
(800) 703-0740

Water Systems Engineers
8616 Blue Grouse Way
Blaine, WA 98230
(360) 371-3107



Revisions

Issued for Tender and Permit - March 2, 2007

Polar Bear Underwater Viewing Area Sections & Interior Elevations

Project Number	05646	Drawing No.	A-320
Project Manager	JS		
Drawn	JK	Scale	1:50
Checked		Date	March 2, 2007
General Notes:			